

DIE NO : 2536/SB

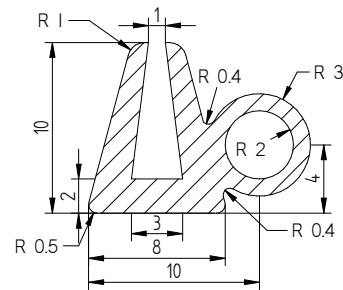
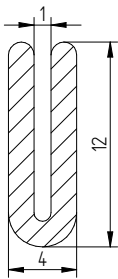
MATERIAL REF : WS.70.1

HARDNESS : 70°SH

DIE NO : 2506/SB

MATERIAL REF : WS.60.1

HARDNESS : 60°SH



DIE NO : 2675/SB

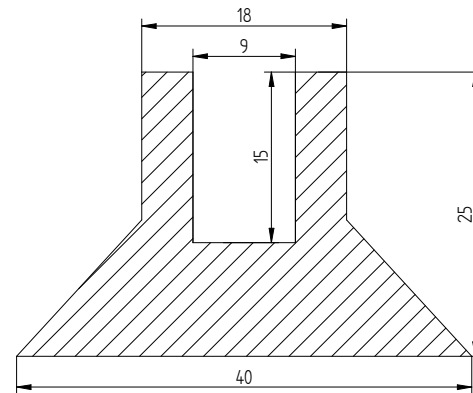
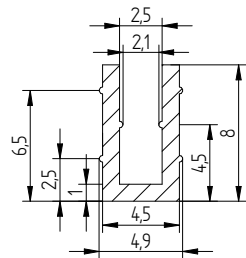
MATERIAL REF : WS.60.1

HARDNESS : 60°SH

DIE NO : 3472/SB

MATERIAL REF : WS.60.1

HARDNESS : 60°SH



DIE NO : 3432/SB

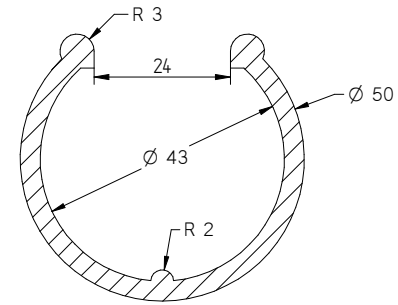
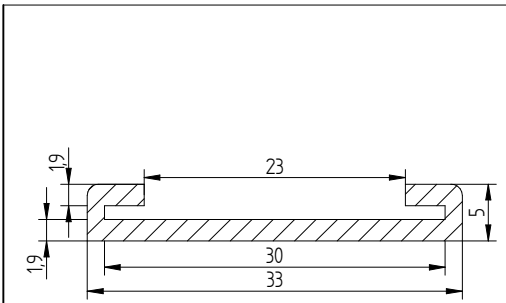
MATERIAL REF : WS.55.1

HARDNESS : 55°SH

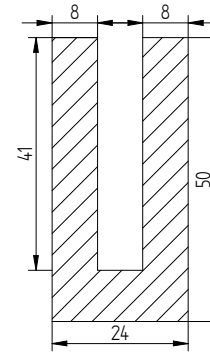
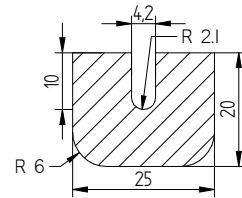
DIE NO : 1895/SB

MATERIAL REF : WS.60.1

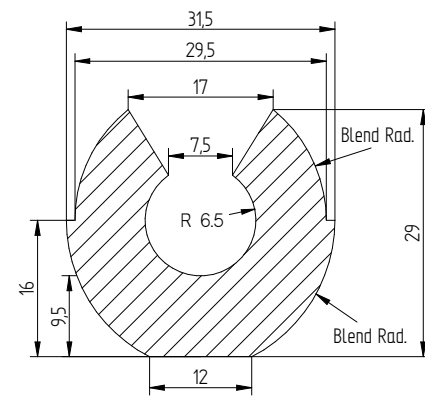
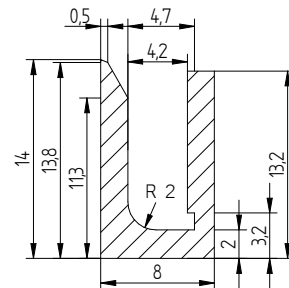
HARDNESS : 60°SH



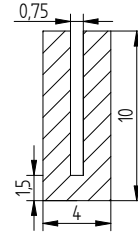
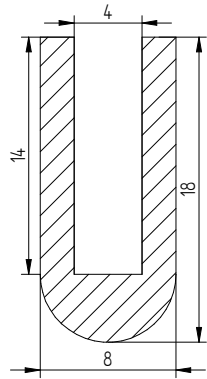
DIE NO : 1960/SB	MATERIAL REF : NPG.60	HARDNESS : 60°SH	DIE NO : 1963/SB	MATERIAL REF : WS.70-80.1.	HARDNESS : 70-80°SH
------------------	-----------------------	------------------	------------------	----------------------------	---------------------



DIE NO : 1965/SB	MATERIAL REF : WS.60.1	HARDNESS : 60°SH	DIE NO : 1970/SB	MATERIAL REF : WS.60.1	HARDNESS : 60°SH
------------------	------------------------	------------------	------------------	------------------------	------------------



DIE NO : 2017/SB	MATERIAL REF : WS.50.1	HARDNESS : 50°SH	DIE NO : 2230/SB	MATERIAL REF : WS.90.1	HARDNESS : 90°SH
------------------	------------------------	------------------	------------------	------------------------	------------------



DIE NO : 1930/SB

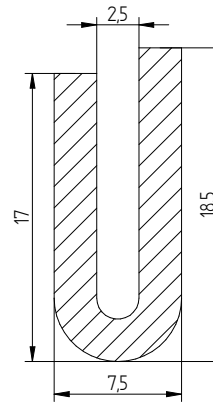
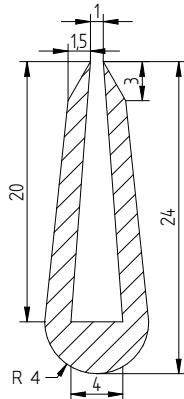
MATERIAL REF : WS.80.1

HARDNESS : 80°SH

DIE NO : 1932/SB

MATERIAL REF : WS.60.1

HARDNESS : 60°SH



DIE NO : 1933/SB

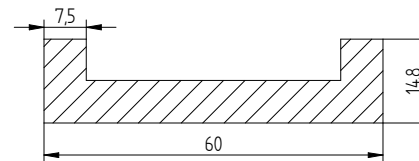
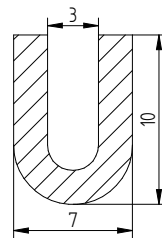
MATERIAL REF : WS.70.1

HARDNESS : 70°SH

DIE NO : 1948/SB

MATERIAL REF : WS.45.1

HARDNESS : 45°SH



DIE NO : 1950/SB

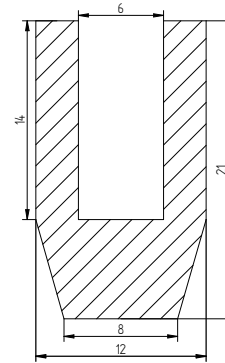
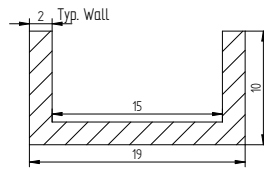
MATERIAL REF : WS.60.1

HARDNESS : 60°SH

DIE NO : 1952/SB

MATERIAL REF : WS.60.1

HARDNESS : 60°SH



DIE NO : 3440/SB

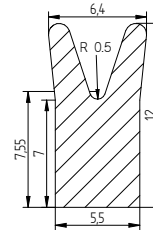
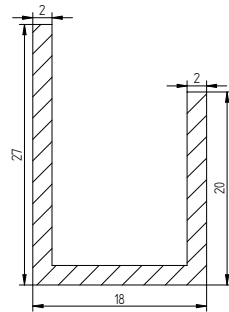
MATERIAL REF : WS.60.1

HARDNESS : 60°SH

DIE NO : 3462/SB

MATERIAL REF : WS.65.1

HARDNESS : 65°SH



DIE NO : 1896/SB

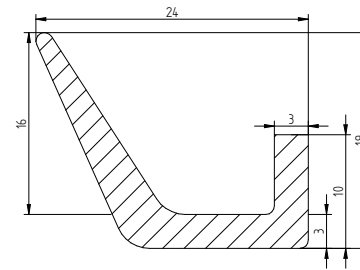
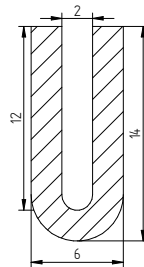
MATERIAL REF : WS.40.1

HARDNESS : 40°SH

DIE NO : 1901/SB

MATERIAL REF : WS.60.1

HARDNESS : 60°SH



DIE NO : 1920/SB

MATERIAL REF :  
High Temp to 250°c, 60sh

HARDNESS : 60°SH

DIE NO : 1926/SB

MATERIAL REF : WS.75.1

HARDNESS : 75°SH