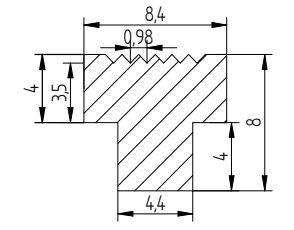
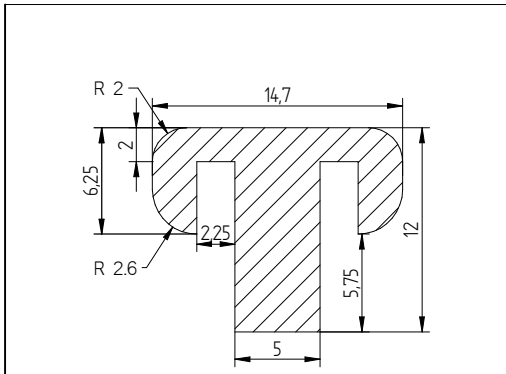
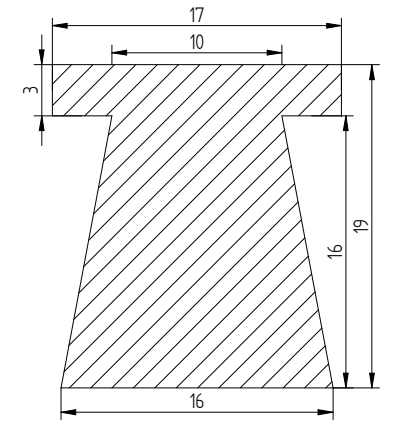
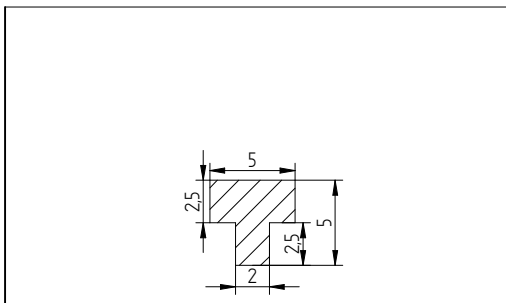


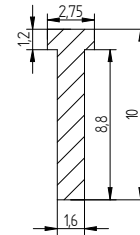
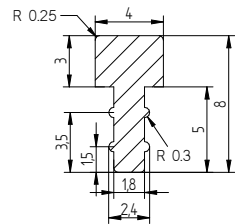
DIE NO : 816/SB	MATERIAL REF : WS.50.1	HARDNESS : 50°SH	DIE NO : 847/SB	MATERIAL REF : WS.80.1	HARDNESS : 80°SH
-----------------	------------------------	------------------	-----------------	------------------------	------------------



DIE NO : 1005/SB	MATERIAL REF : WS.70.1	HARDNESS : 70°SH	DIE NO : 1046/SB	MATERIAL REF : WS.60.1	HARDNESS : 60°SH
------------------	------------------------	------------------	------------------	------------------------	------------------



DIE NO : 1071/SB	MATERIAL REF : WS.50.1	HARDNESS : 50°SH	DIE NO : 1100/SB	MATERIAL REF : WS.60.1	HARDNESS : 60°SH
------------------	------------------------	------------------	------------------	------------------------	------------------



DIE NO : 2656/SB

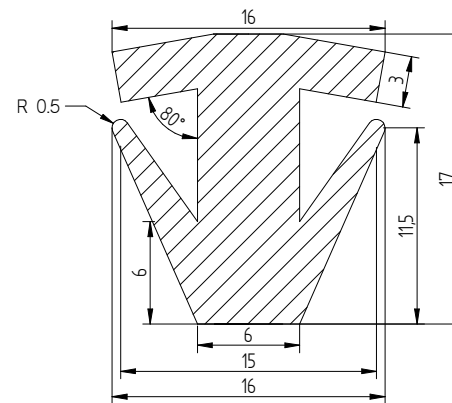
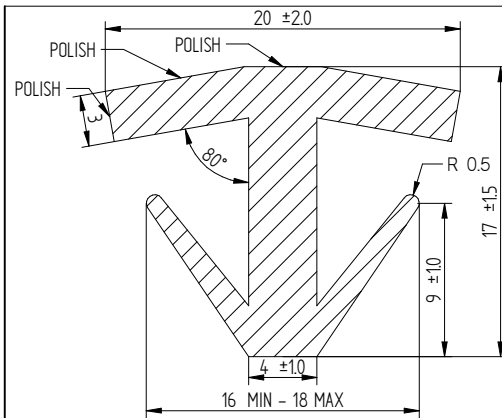
MATERIAL REF : WS.80.1

HARDNESS : 80°SH

DIE NO : 2708/SB

MATERIAL REF : WS.80.1

HARDNESS : 80°SH



DIE NO : 2729/SB

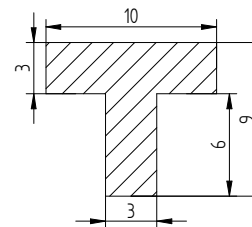
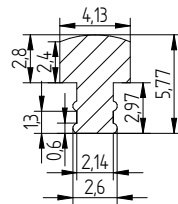
MATERIAL REF : WS.TBC.1

HARDNESS : TBC°SH

DIE NO : 2743/SB

MATERIAL REF : NGP.60

HARDNESS : 60°SH



DIE NO : 2747/SB

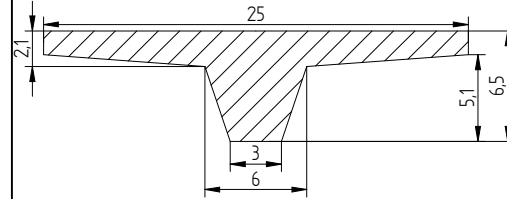
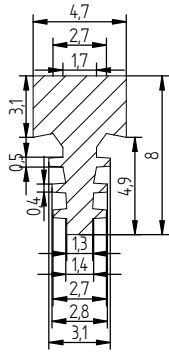
MATERIAL REF : WS.60.1

HARDNESS : 60°SH

DIE NO : 1237/SB

MATERIAL REF : WS.60.1

HARDNESS : 60°SH



DIE NO : 3413/SB

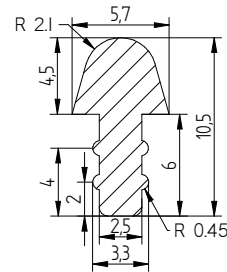
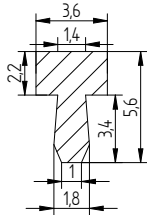
MATERIAL REF : WS.70.1

HARDNESS : 70°SH

DIE NO : 3425/SB

MATERIAL REF : WS.90.1

HARDNESS : 90°SH



DIE NO : 3412/SB

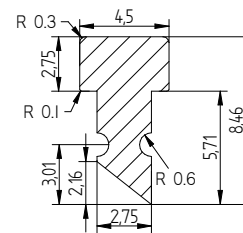
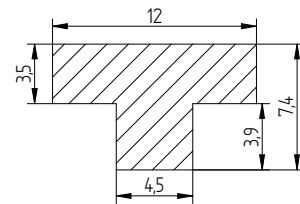
MATERIAL REF : WS.70.1

HARDNESS : 70°SH

DIE NO : 3411/SB

MATERIAL REF : WS.50.1

HARDNESS : 50°SH



DIE NO : 3335/SB

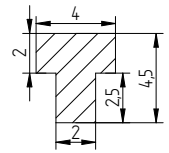
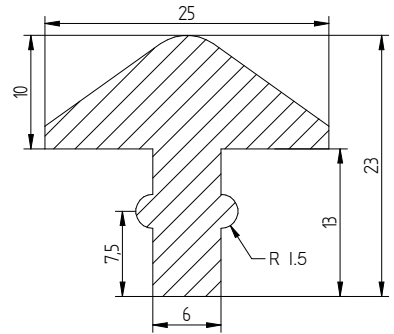
MATERIAL REF : WS.60.1

HARDNESS : 60°SH

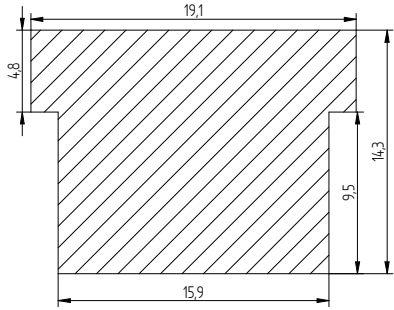
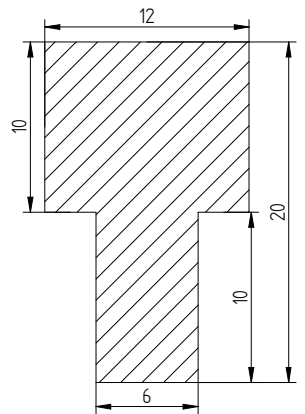
DIE NO : 3327/SB

MATERIAL REF : WS.70.1

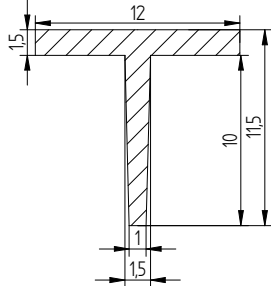
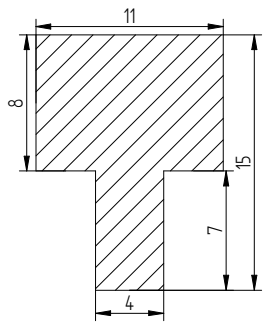
HARDNESS : 70°SH



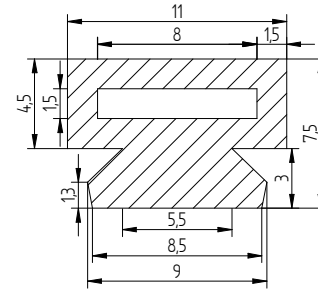
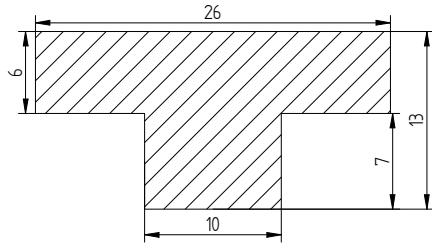
DIE NO : 266/SB	MATERIAL REF : WS.60.1	HARDNESS : 60°SH	DIE NO : 306/SB	MATERIAL REF : WS.60.1	HARDNESS : 60°SH
-----------------	------------------------	------------------	-----------------	------------------------	------------------



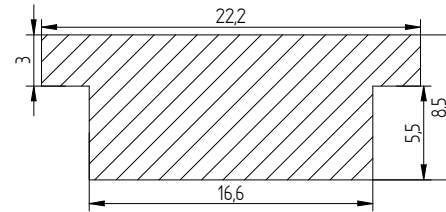
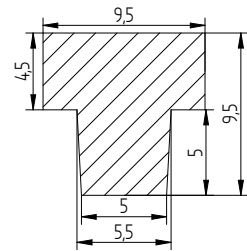
DIE NO : 358/SB	MATERIAL REF : WS.50.1	HARDNESS : 50°SH	DIE NO : 391/SB	MATERIAL REF : WS.50.1	HARDNESS : 50°SH
-----------------	------------------------	------------------	-----------------	------------------------	------------------



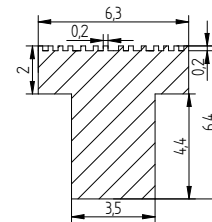
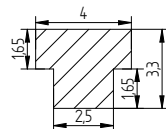
DIE NO : 594/SB	MATERIAL REF : WS.45.1	HARDNESS : 45°SH	DIE NO : 713/SB	MATERIAL REF : WS.60.1	HARDNESS : 60°SH
-----------------	------------------------	------------------	-----------------	------------------------	------------------



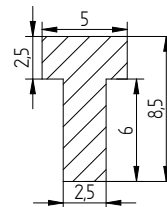
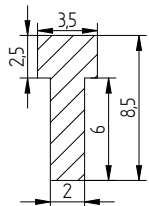
DIE NO : 1101/SB	MATERIAL REF : WS.60.1	HARDNESS : 60°SH	DIE NO : 1112/SB	MATERIAL REF : Met Detect, 70sh. High Temp 250°c	HARDNESS : 70°SH
------------------	------------------------	------------------	------------------	--	------------------



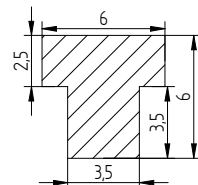
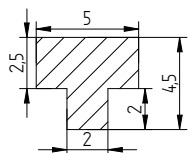
DIE NO : 1129/SB	MATERIAL REF : WS.40.1	HARDNESS : 40°SH	DIE NO : 1134/SB	MATERIAL REF : WS.65.1	HARDNESS : 65°SH
------------------	------------------------	------------------	------------------	------------------------	------------------



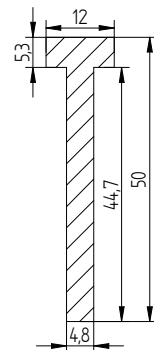
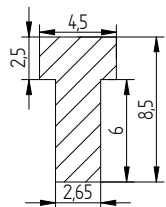
DIE NO : 1148/SB	MATERIAL REF : WS.60.1	HARDNESS : 60°SH	DIE NO : 1163/SB	MATERIAL REF : WS.50.1	HARDNESS : 50°SH
------------------	------------------------	------------------	------------------	------------------------	------------------



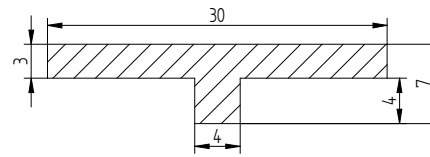
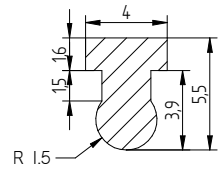
DIE NO : 1733/SB	MATERIAL REF : WS.80.1	HARDNESS : 80°SH	DIE NO : 1764/SB	MATERIAL REF : WS.70.1	HARDNESS : 70°SH
------------------	------------------------	------------------	------------------	------------------------	------------------



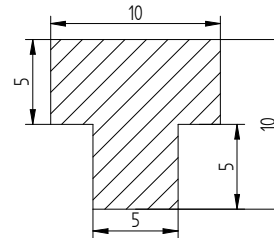
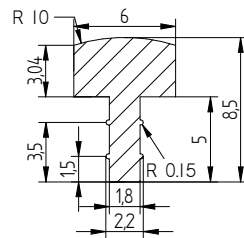
DIE NO : 1701/SB	MATERIAL REF : WS.60.1	HARDNESS : 60°SH	DIE NO : 1727/SB	MATERIAL REF : WS.65.1	HARDNESS : 65°SH
------------------	------------------------	------------------	------------------	------------------------	------------------



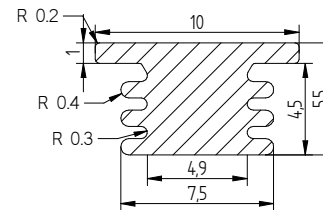
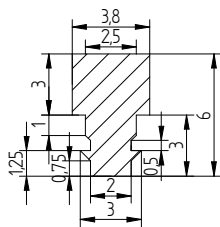
DIE NO : 1636/SB	MATERIAL REF : WS.80.1	HARDNESS : 80°SH	DIE NO : 1624/SB	MATERIAL REF : WS.80.1	HARDNESS : 80°SH
------------------	------------------------	------------------	------------------	------------------------	------------------



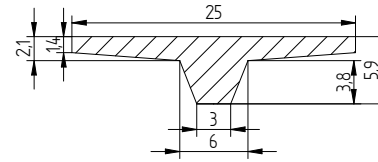
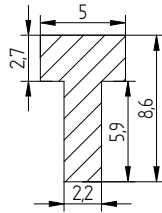
DIE NO : 3178/SB	MATERIAL REF : WS.60.1	HARDNESS : 60°SH	DIE NO : 3157/SB	MATERIAL REF : WS.60.1	HARDNESS : 60°SH
------------------	------------------------	------------------	------------------	------------------------	------------------



DIE NO : 3192/SB	MATERIAL REF : WS.75.1	HARDNESS : 75°SH	DIE NO : 3182/SB	MATERIAL REF : WS.50.1	HARDNESS : 50°SH
------------------	------------------------	------------------	------------------	------------------------	------------------



DIE NO : 3198/SB	MATERIAL REF : WS.60.1	HARDNESS : 60°SH	DIE NO : 3194/SB	MATERIAL REF : WS.45.1	HARDNESS : 45°SH
------------------	------------------------	------------------	------------------	------------------------	------------------



DIE NO : 3320/SB

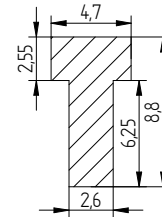
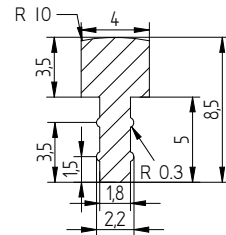
MATERIAL REF : WS.70.1

HARDNESS : 70°SH

DIE NO : 3318/SB

MATERIAL REF : WS.90.1

HARDNESS : 90°SH



DIE NO : 3314/SB

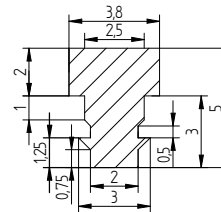
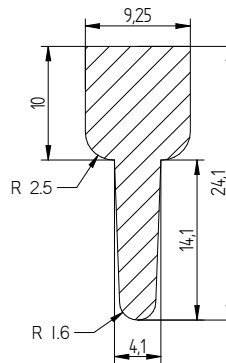
MATERIAL REF : WS.40.1

HARDNESS : 40°SH

DIE NO :
3267X/SB

MATERIAL REF : WS.80.1

HARDNESS : 80°SH



DIE NO : 3264/SB

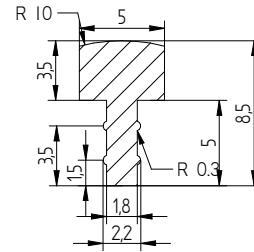
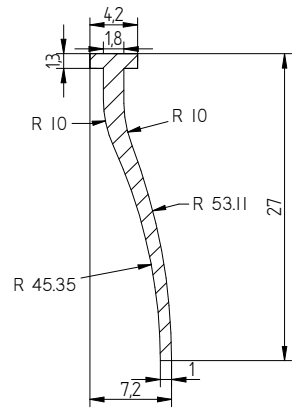
MATERIAL REF : WS.70.1

HARDNESS : 70°SH

DIE NO : 3200/SB

MATERIAL REF : WS.60.1

HARDNESS : 60°SH



DIE NO : 2946/SB

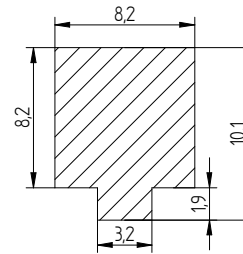
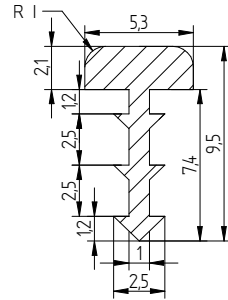
MATERIAL REF : WS.70.1

HARDNESS : 70°SH

DIE NO : 2957/SB

MATERIAL REF : WS.75.1

HARDNESS : 75°SH



DIE NO : 2964/SB

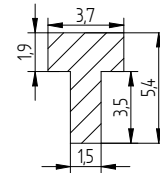
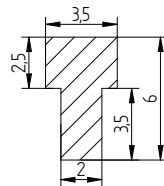
MATERIAL REF : TBC

HARDNESS :
TBC°SH

DIE NO : 2975/SB

MATERIAL REF : WS.65.1

HARDNESS : 65°SH



DIE NO : 2972/SB

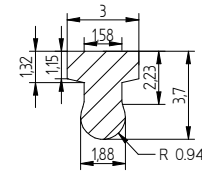
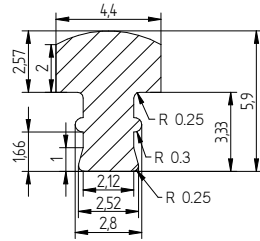
MATERIAL REF : WS.50.1

HARDNESS : 50°SH

DIE NO : 2973/SB

MATERIAL REF : WS.60.1

HARDNESS : 60°SH



DIE NO : 2929/SB

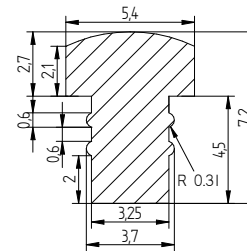
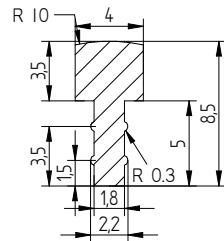
MATERIAL REF : WS.75.1

HARDNESS : 75°SH

DIE NO : 2936/SB

MATERIAL REF : WS.60.1

HARDNESS : 60°SH



DIE NO : 2915/SB

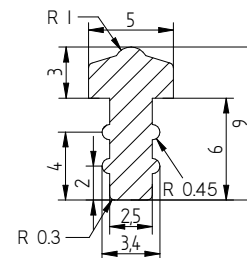
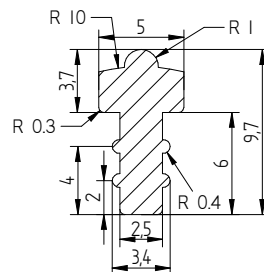
MATERIAL REF : WS.75.1

HARDNESS : 75°SH

DIE NO : 2925/SB

MATERIAL REF : WS.75.1

HARDNESS : 75°SH



DIE NO : 2908/SB

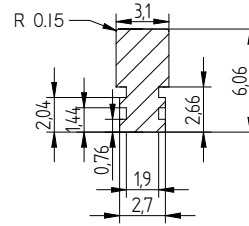
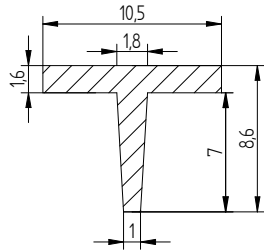
MATERIAL REF : WS.50.1

HARDNESS : 50°SH

DIE NO : 2878/SB

MATERIAL REF : WS.50.1

HARDNESS : 50°SH



DIE NO : 2852/SB

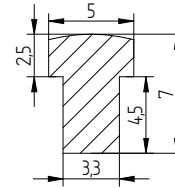
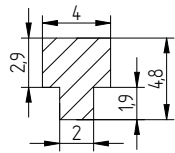
MATERIAL REF : WS.50.1

HARDNESS : 50°SH

DIE NO : 2871/SB

MATERIAL REF : WS.75.1

HARDNESS : 75°SH



DIE NO : 2843/SB

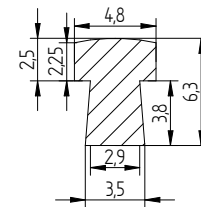
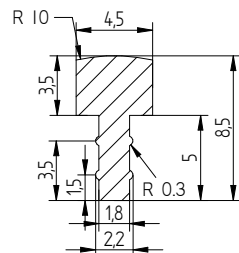
MATERIAL REF : WS.60.1

HARDNESS : 60°SH

DIE NO : 2839/SB

MATERIAL REF : WS.60.1

HARDNESS : 60°SH



DIE NO : 2838/SB

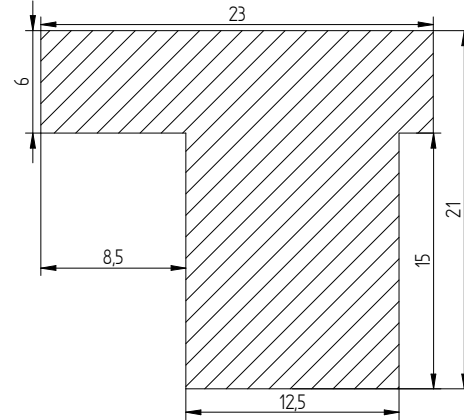
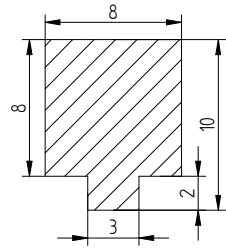
MATERIAL REF : WS.60.1

HARDNESS : 60°SH

DIE NO : 2837/SB

MATERIAL REF : WS.60.1

HARDNESS : 60°SH



DIE NO : 2785/SB

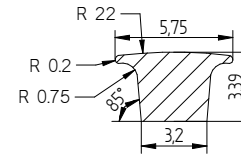
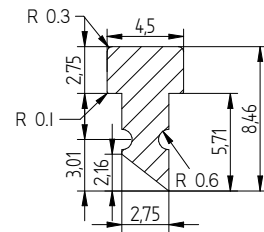
MATERIAL REF : WS.80.1

HARDNESS : 80°SH

DIE NO : 2779/SB

MATERIAL REF : WS.70.1

HARDNESS : 70°SH



DIE NO : 2769/SB

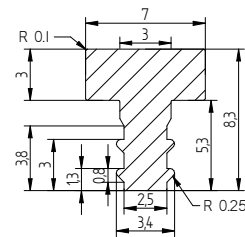
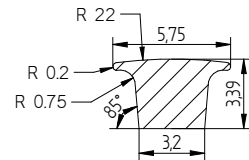
MATERIAL REF : WS.80.1

HARDNESS : 80°SH

DIE NO : 2758/SB

MATERIAL REF : WS.40.1

HARDNESS : 40°SH



DIE NO : 2648/SB

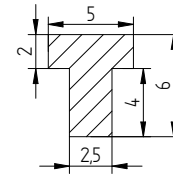
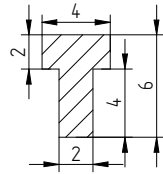
MATERIAL REF : WS.50.1

HARDNESS : 50°SH

DIE NO : 2640/SB

MATERIAL REF : NGP.50

HARDNESS : 50°SH



DIE NO : 2323/SB

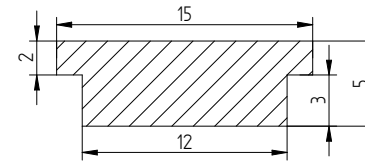
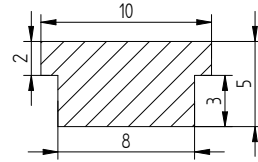
MATERIAL REF : WS.80.1

HARDNESS : 80°SH

DIE NO : 2324/SB

MATERIAL REF : WS.80.1

HARDNESS : 80°SH



DIE NO : 2327/SB

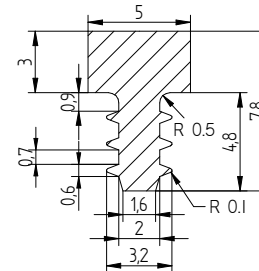
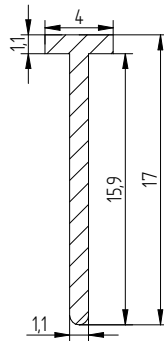
MATERIAL REF : WS.70.1

HARDNESS : 70°SH

DIE NO : 2345/SB

MATERIAL REF : WS.70.1

HARDNESS : 70°SH



DIE NO : 2352/SB

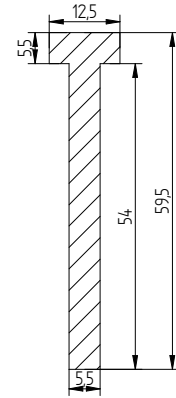
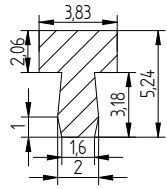
MATERIAL REF : NGP.60

HARDNESS : 60°SH

DIE NO : 2377/SB

MATERIAL REF : WS.60.1

HARDNESS : 60°SH



DIE NO : 2481/SB

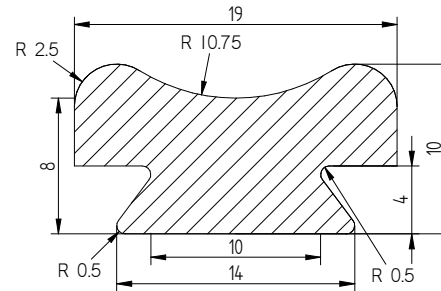
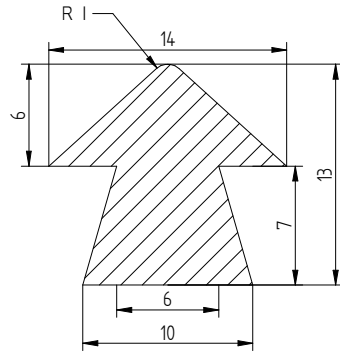
MATERIAL REF : WS.60.1

HARDNESS : 60°SH

DIE NO : 3397/SB

MATERIAL REF : WS.60.1

HARDNESS : 60°SH



DIE NO : 3387/SB

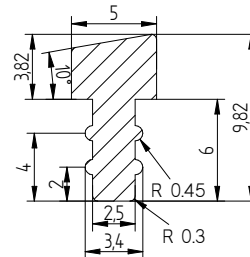
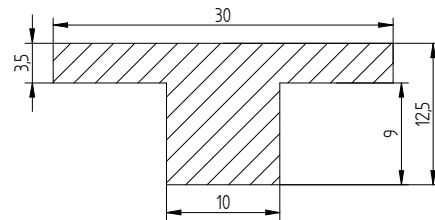
MATERIAL REF : WS.60.1

HARDNESS : 60°SH

DIE NO : 3355/SB

MATERIAL REF : WS.60.1

HARDNESS : 60°SH



DIE NO : 3349/SB

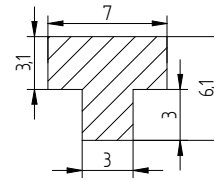
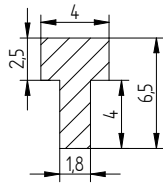
MATERIAL REF : WS.50.1

HARDNESS : 50°SH

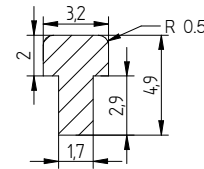
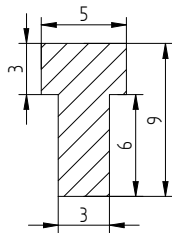
DIE NO : 3346/SB

MATERIAL REF : WS.80.1

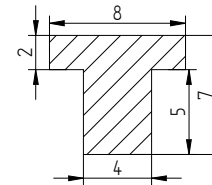
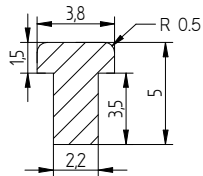
HARDNESS : 80°SH



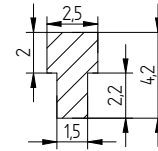
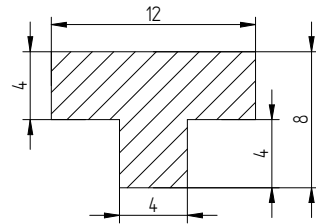
DIE NO : 2144/SB	MATERIAL REF : WS.80.1	HARDNESS : 80°SH	DIE NO : 2162/SB	MATERIAL REF : WS.65.1	HARDNESS : 65°SH
------------------	------------------------	------------------	------------------	------------------------	------------------



DIE NO : 2196/SB	MATERIAL REF : WS.80.1	HARDNESS : 80°SH	DIE NO : 2200/SB	MATERIAL REF : WS.70.1	HARDNESS : 70°SH
------------------	------------------------	------------------	------------------	------------------------	------------------



DIE NO : 2219/SB	MATERIAL REF : WS.70.1	HARDNESS : 70°SH	DIE NO : 2298/SB	MATERIAL REF : WS.TBC.1	HARDNESS : TBC°SH
------------------	------------------------	------------------	------------------	-------------------------	-------------------



DIE NO : 2037/SB

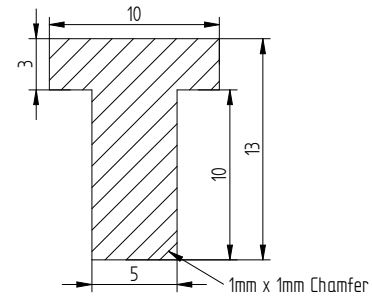
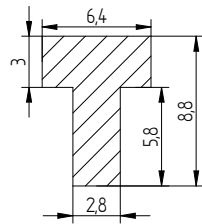
MATERIAL REF : WS.65.1

HARDNESS : 65°SH

DIE NO : 2038/SB

MATERIAL REF : WS.65.1

HARDNESS : 65°SH



DIE NO : 2077/SB

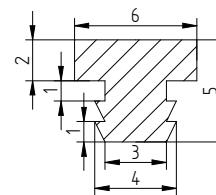
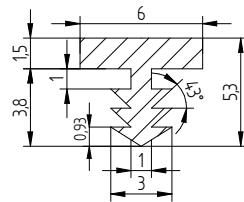
MATERIAL REF : WS.70.1

HARDNESS : 70°SH

DIE NO : 2084/SB

MATERIAL REF : WS.30-40.1

HARDNESS : 30-40°SH



DIE NO : 2107/SB

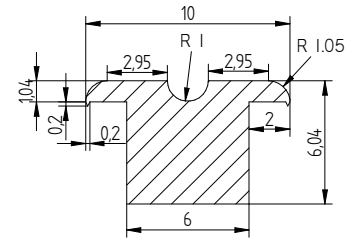
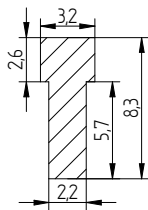
MATERIAL REF : High Temp 250°c, 80sh

HARDNESS : 80°SH

DIE NO : 2138/SB

MATERIAL REF : WS.70.1

HARDNESS : 70°SH



DIE NO : 3478/SB

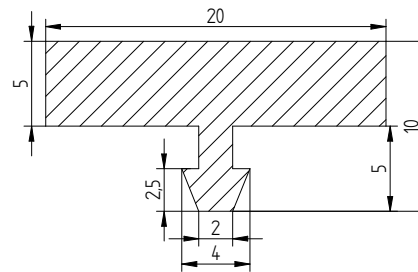
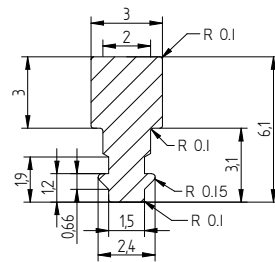
MATERIAL REF : WS.70.1

HARDNESS : 70°SH

DIE NO : 3481/SB

MATERIAL REF : WS.60.1

HARDNESS : 60°SH



DIE NO : 2009/SB

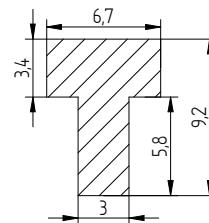
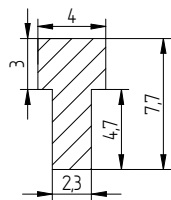
MATERIAL REF : NGP.50

HARDNESS : 50°SH

DIE NO : 2449/SB

MATERIAL REF : WS.70.1

HARDNESS : 70°SH



DIE NO : 2424/SB

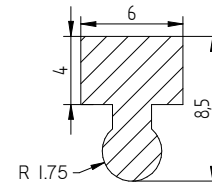
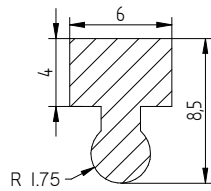
MATERIAL REF : WS.60.1

HARDNESS : 60°SH

DIE NO : 2421/SB

MATERIAL REF : WS.70.1

HARDNESS : 70°SH



DIE NO : 1921/SB

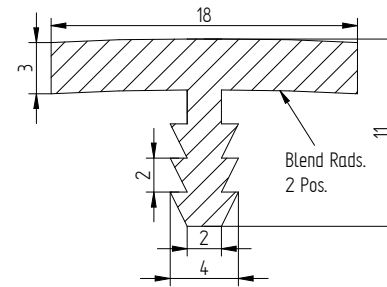
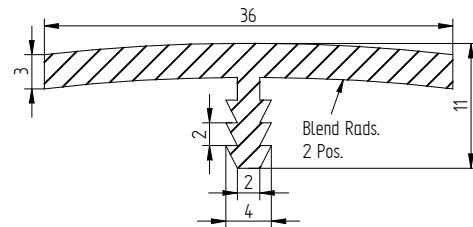
MATERIAL REF : WS.65.1

HARDNESS : 65°SH

DIE NO : 1899/SB

MATERIAL REF : WS.50.1

HARDNESS : 50°SH



DIE NO : 1894/SB

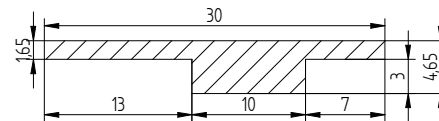
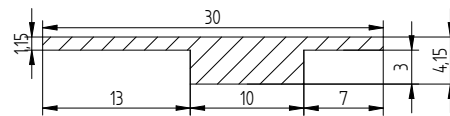
MATERIAL REF : WS.70.1

HARDNESS : 70°SH

DIE NO : 1893/SB

MATERIAL REF : WS.70.1

HARDNESS : 70°SH



DIE NO : 3479/SB

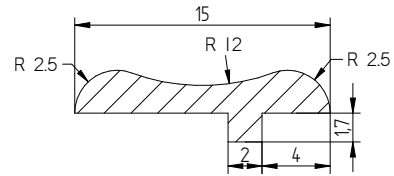
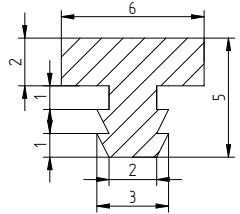
MATERIAL REF :
High Temp 300°c, 40sh

HARDNESS : 40°SH

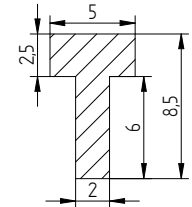
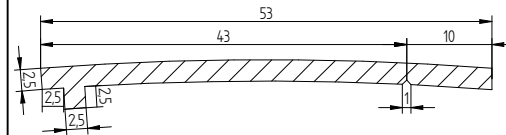
DIE NO : 3480/SB

MATERIAL REF :
High Temp 300°c, 40sh

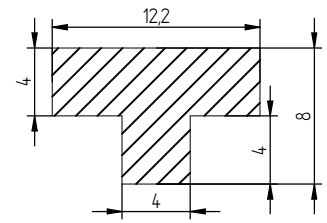
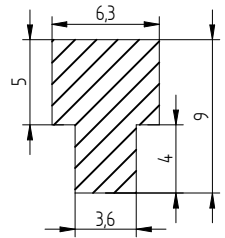
HARDNESS : 40°SH



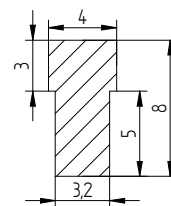
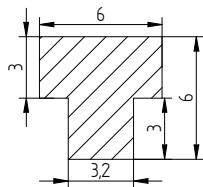
DIE NO : 2122/SB	MATERIAL REF : WS.70.1	HARDNESS : 70°SH	DIE NO : 2019/SB	MATERIAL REF : WS.50/70.1.	HARDNESS : 50/70°SH
------------------	------------------------	------------------	------------------	----------------------------	---------------------



DIE NO : 3465/SB	MATERIAL REF : WS.70.1	HARDNESS : 70°SH	DIE NO : 3468/SB	MATERIAL REF : WS.75.1	HARDNESS : 75°SH
------------------	------------------------	------------------	------------------	------------------------	------------------



DIE NO : 1900/SB	MATERIAL REF : WS.80.1	HARDNESS : 80°SH	DIE NO : 1908/SB	MATERIAL REF : WS.65.1	HARDNESS : 65°SH
------------------	------------------------	------------------	------------------	------------------------	------------------



DIE NO : 1837/SB

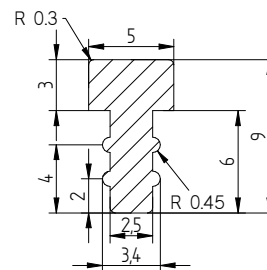
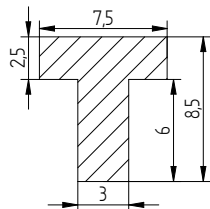
MATERIAL REF : WS.70.1

HARDNESS : 70°SH

DIE NO : 1836/SB

MATERIAL REF : WS.70.1

HARDNESS : 70°SH



DIE NO : 1687/SB

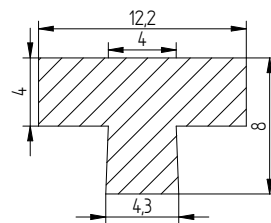
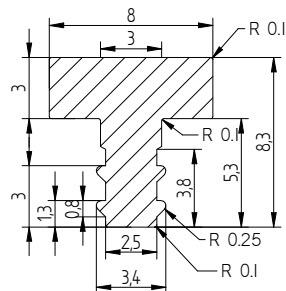
MATERIAL REF : WS.80.1

HARDNESS : 80°SH

DIE NO : 2886/SB

MATERIAL REF :
High Temp 300°c.80sh

HARDNESS : 80°SH



DIE NO : 2012/SB

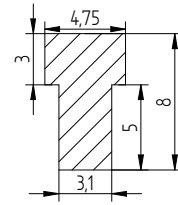
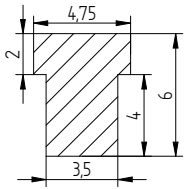
MATERIAL REF : NGP.50

HARDNESS : 50°SH

DIE NO : 1923/SB

MATERIAL REF : WS.75.1

HARDNESS : 75°SH



DIE NO : 1774/SB

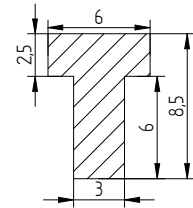
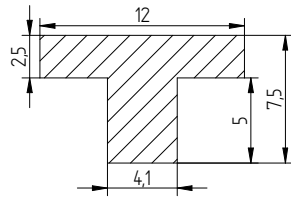
MATERIAL REF : WS.70.1

HARDNESS : 70°SH

DIE NO : 1812/SB

MATERIAL REF : WS.70.1

HARDNESS : 70°SH



DIE NO : 1815/SB

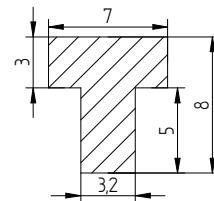
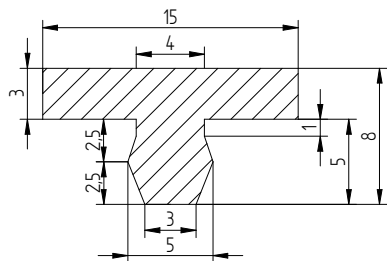
MATERIAL REF : WS.70.1

HARDNESS : 70°SH

DIE NO : 1827/SB

MATERIAL REF : WS.80.1

HARDNESS : 80°SH



DIE NO : 1735/SB

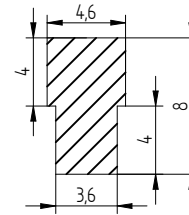
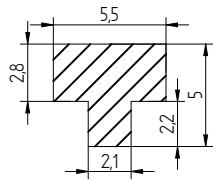
MATERIAL REF : WS.70.1

HARDNESS : 70°SH

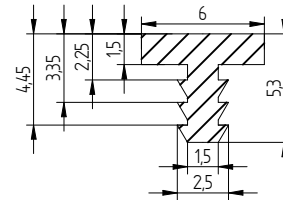
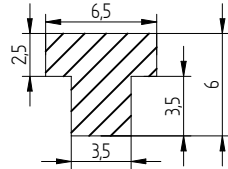
DIE NO : 1835/SB

MATERIAL REF : WS.70.1

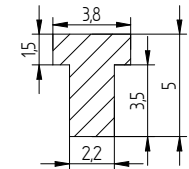
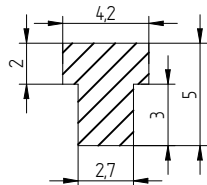
HARDNESS : 70°SH



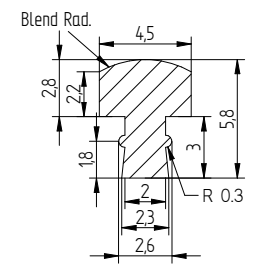
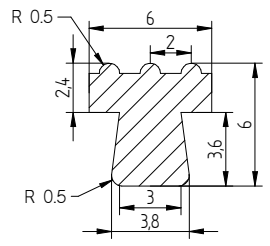
DIE NO : 1903/SB	MATERIAL REF : WS.30.1	HARDNESS : 30°SH	DIE NO : 1942/SB	MATERIAL REF : WS.80.1	HARDNESS : 80°SH
------------------	------------------------	------------------	------------------	------------------------	------------------



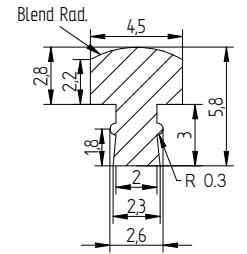
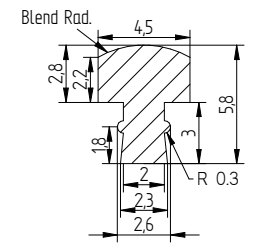
DIE NO : 1959/SB	MATERIAL REF : WS.70.1	HARDNESS : 70°SH	DIE NO : 1994/SB	MATERIAL REF : WS.70.1	HARDNESS : 70°SH
------------------	------------------------	------------------	------------------	------------------------	------------------



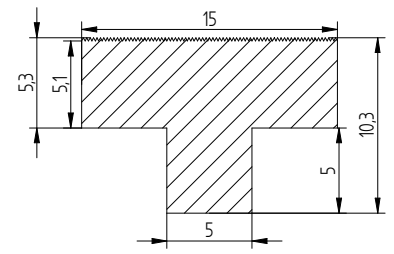
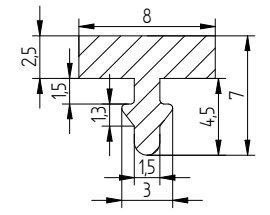
DIE NO : 2005/SB	MATERIAL REF : WS.50.1	HARDNESS : 50°SH	DIE NO : 2026/SB	MATERIAL REF : WS.70.1	HARDNESS : 70°SH
------------------	------------------------	------------------	------------------	------------------------	------------------



DIE NO : 1565/SB	MATERIAL REF : WS.80.1	HARDNESS : 80°SH	DIE NO : 1573/SB	MATERIAL REF : WS.40.1	HARDNESS : 40°SH
------------------	------------------------	------------------	------------------	------------------------	------------------



DIE NO : 1574/SB	MATERIAL REF : WS.60.1	HARDNESS : 60°SH	DIE NO : 1575/SB	MATERIAL REF : WS.80.1	HARDNESS : 80°SH
------------------	------------------------	------------------	------------------	------------------------	------------------



DIE NO : 1602/SB	MATERIAL REF : WS.80.1	HARDNESS : 80°SH	DIE NO : 1616/SB	MATERIAL REF : NGP.60	HARDNESS : 60°SH
------------------	------------------------	------------------	------------------	-----------------------	------------------